

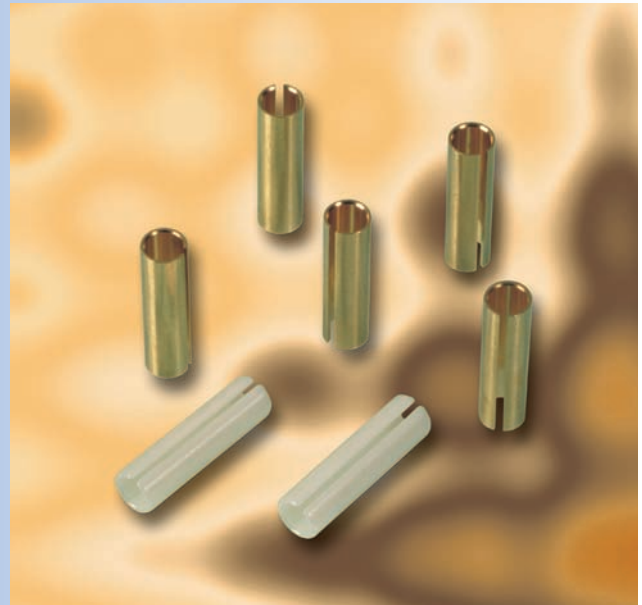
P-SV SLEEVES

Features:

- Low insertion loss
- Easy to handle
- Environmentally stable

Applications:

- Telecommunications
- Local area network
- Fiber to the home
- Fiber optic sensors
- Testing instruments
- CATV



Performance Specifications:

ITEM	Adaptors	
	Ceramic	Bronze
Sleeve Material		
Typical Insertion Loss, dB	0.1	0.3
Maximum Insertion Loss, dB	0.3	0.5
Operating Temperature, °C	-40 ~ +75	
Storage Temperature, °C	-55 ~ +85	

Ordering Information:

P - SV - □□ - □

Type

- SC SC type
- XX Others, please specify

Sleeve Material

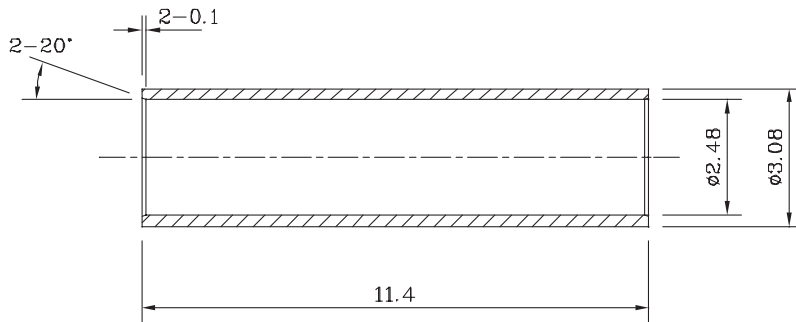
- B Bronze
- C Ceramic (Zirconia)

SLEEVES

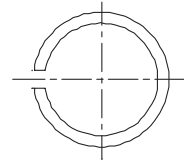
Mechanical Drawings:

Unit: mm

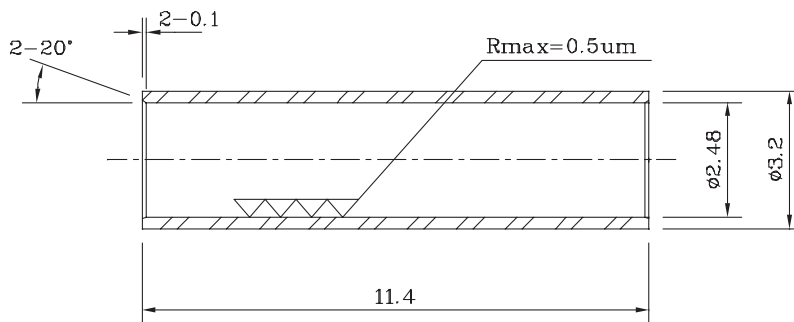
Material : Metal (Ph.-Bronze / Be.-Bronze) Multimode



P-SV-□□-B



Material : Ceramic (Zirconia)



P-SV-□□-C

