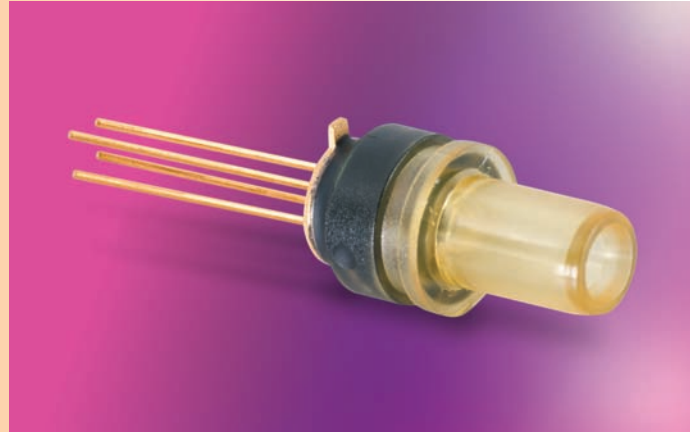


E-RA InGaAs PIN PECEPTACLE

Features:

- High responsivity
- Low dark current
- Fast pulse response
- Low inter-modulation distortion
- Suitable for CATV application
- FC/ST/SC/LC receptacle package



Performance Specifications:

Absolute Maximum Ratings (Tc=25C)

PARAMETER	SYMBOL	UNIT	min	max	Conditions
Operating Temperature	Ta	°C	-40	85	
Storage Temperature	TSTG	°C	-40	85	
Lead Solder Temperature	Tsol	°C		260	10seconds
Forward Current	If	mA		3	
Reverse Voltage	Vr	V		20	

Electro-Optical Specifications (Operating at Vr =5V 9/125um SM fiber)

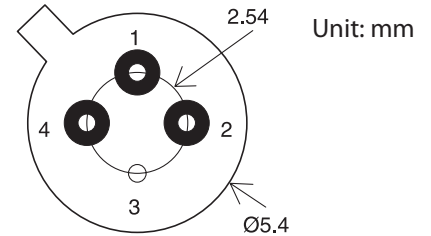
PARAMETER	SYMBOL	UNIT	MIN.	TYP.	MAX.	TEST CONDITIONS
Detection Range	λ	nm	1100	1310	1650	
Responsivity	R	A/W	0.8	0.9		$\lambda = 1310\text{nm}$
Dark Current	Id	nA			4	Ta=25°C
Capacitance	C	pF			0.7	f=1 MHz
Breakdown Voltage	VBD		40			IR=10uA
Second Order Inter Modulation Distortion	IMD2 BW	dBc GHz		-80	-75	$\lambda = 1310\text{nm}$, 2 laser 2 tone, OMD=70% each Pin=0dBm, (Note 1)
Band Width	BW	GHz	3			

Note: 1 modulation input light signal come from two independent laser source with a modulation frequency
f1=244MH,f2=250MHz repectively

InGaAs PIN RECEPTACLE

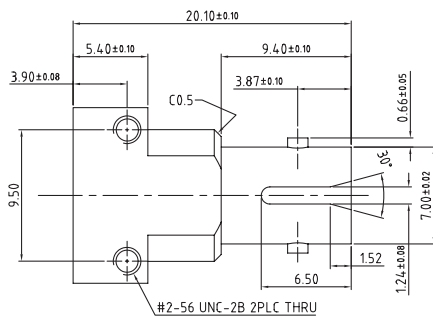
Outline Dimension:

TYPE	Description			
K	1	2	3	4
	Anode	Cathode	Case	NC

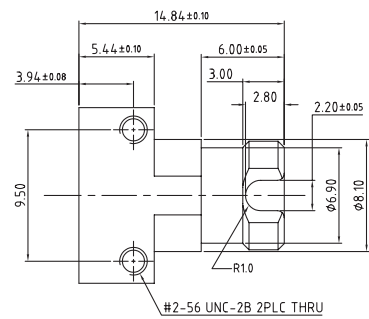


Bottom View

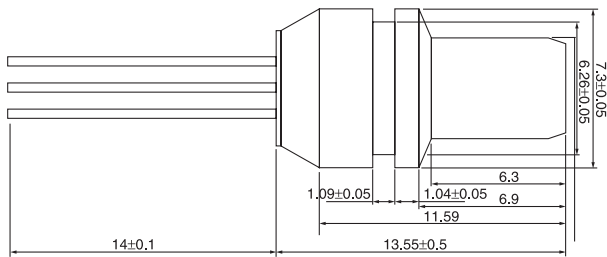
Mechanical Dimension:



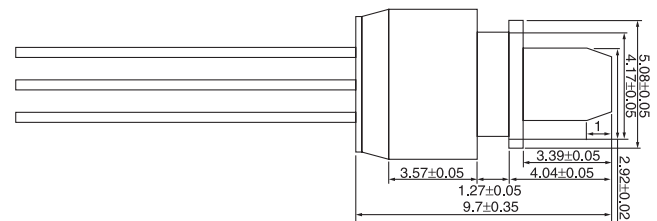
E-RA-3GISTKM1-4A-0



E-RA-3GIFCKM1-4A-0



E-RA-3GIOSKP1-4A-0



E-RA-3GIOLKP1-4A-0

Ordering Information:

E - RA - 3GI□□K□□ - 4A - 0

Bandwidth	3G	3 GHz
PIN Type	I	InGaAs PIN
Connector Type	ST	ST
	FC	FC
	OS	OSA SC
	OL	OSA LC
Pin Assignment	K	K Type
Exterior	M1	Metal Housing
	P1	Plastics Housing